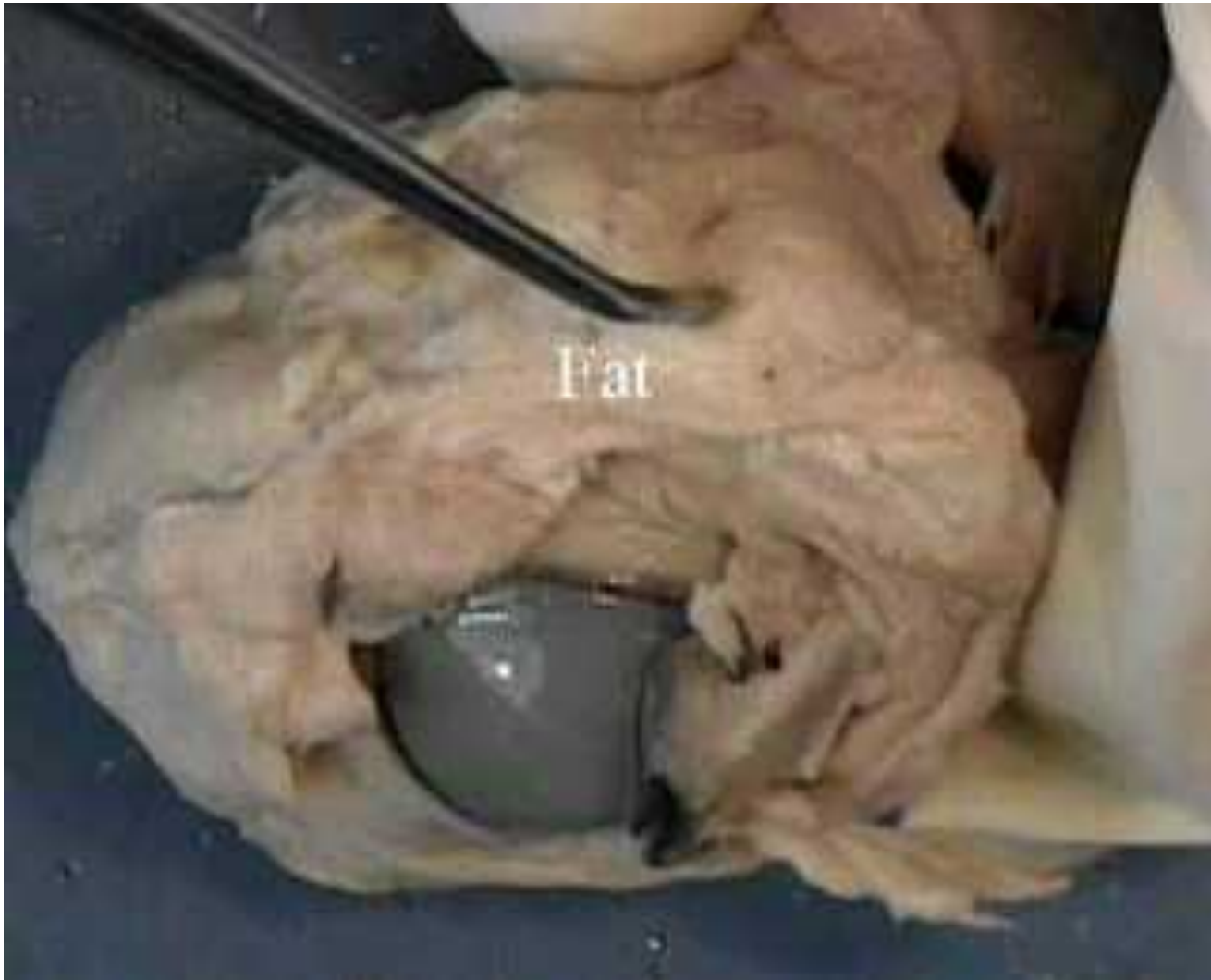


# Eye Dissection

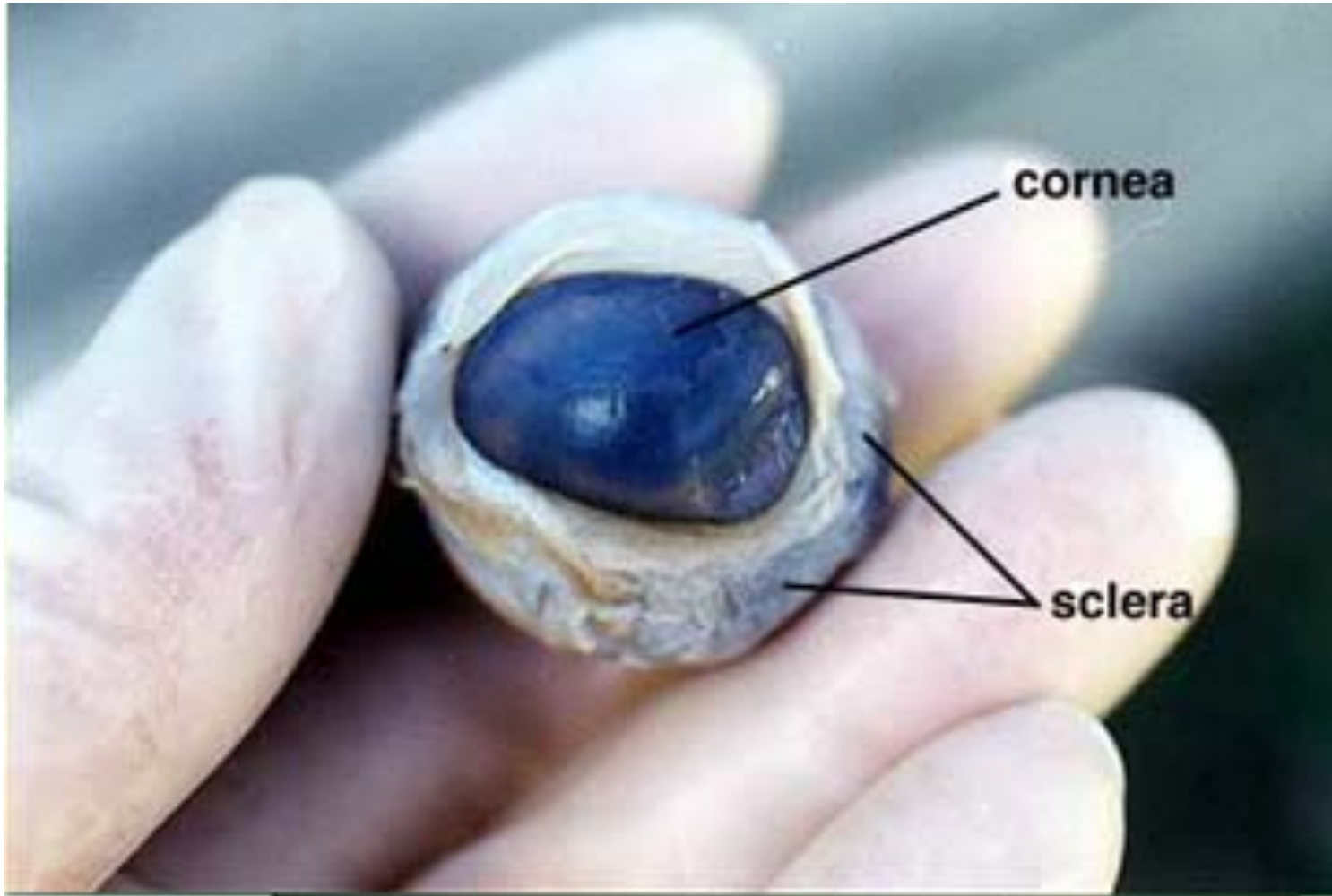
- Before we go over the dissection, let's review the parts of the eye and their function

**TIME TO BEGIN THE DISSECTION!!!**

Cut away fat using scissors



# Anterior External Eye Structure



# Posterior External Eye Structures





**Insert the point of the scissors into the slit and cut the sclera all the way around the ball of the eye.**



- Select a place to make an incision of the sclera midway between the cornea and optic nerve. Use the point of a surgical scissors to make a small cut through the sclera. Fluid should ooze out of the eyeball when you have cut deeply enough.

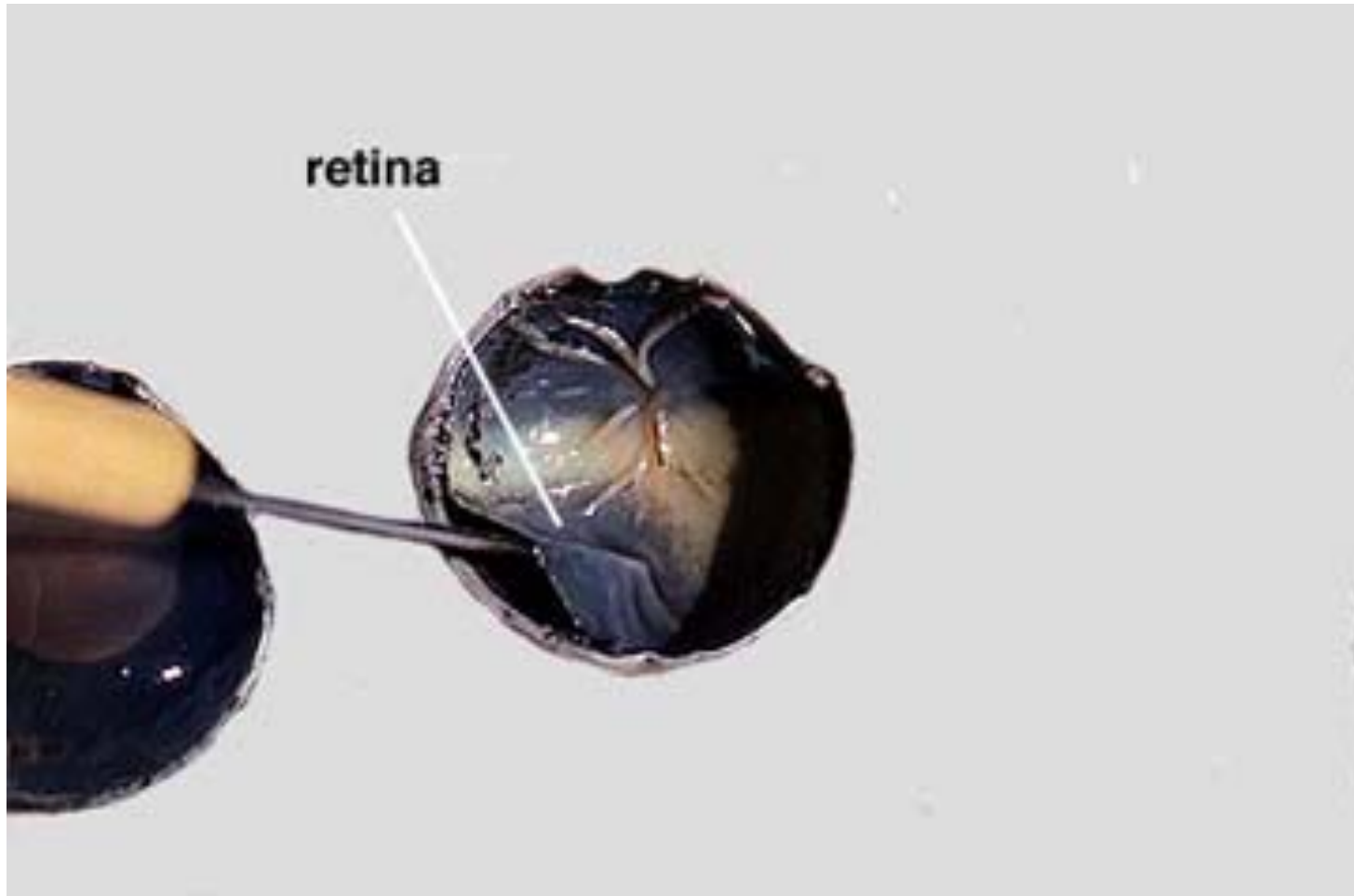
**Insert the scissors into the slit and cut the sclera around the eyeball. Cut the sclera with a shallow snipping motion.**





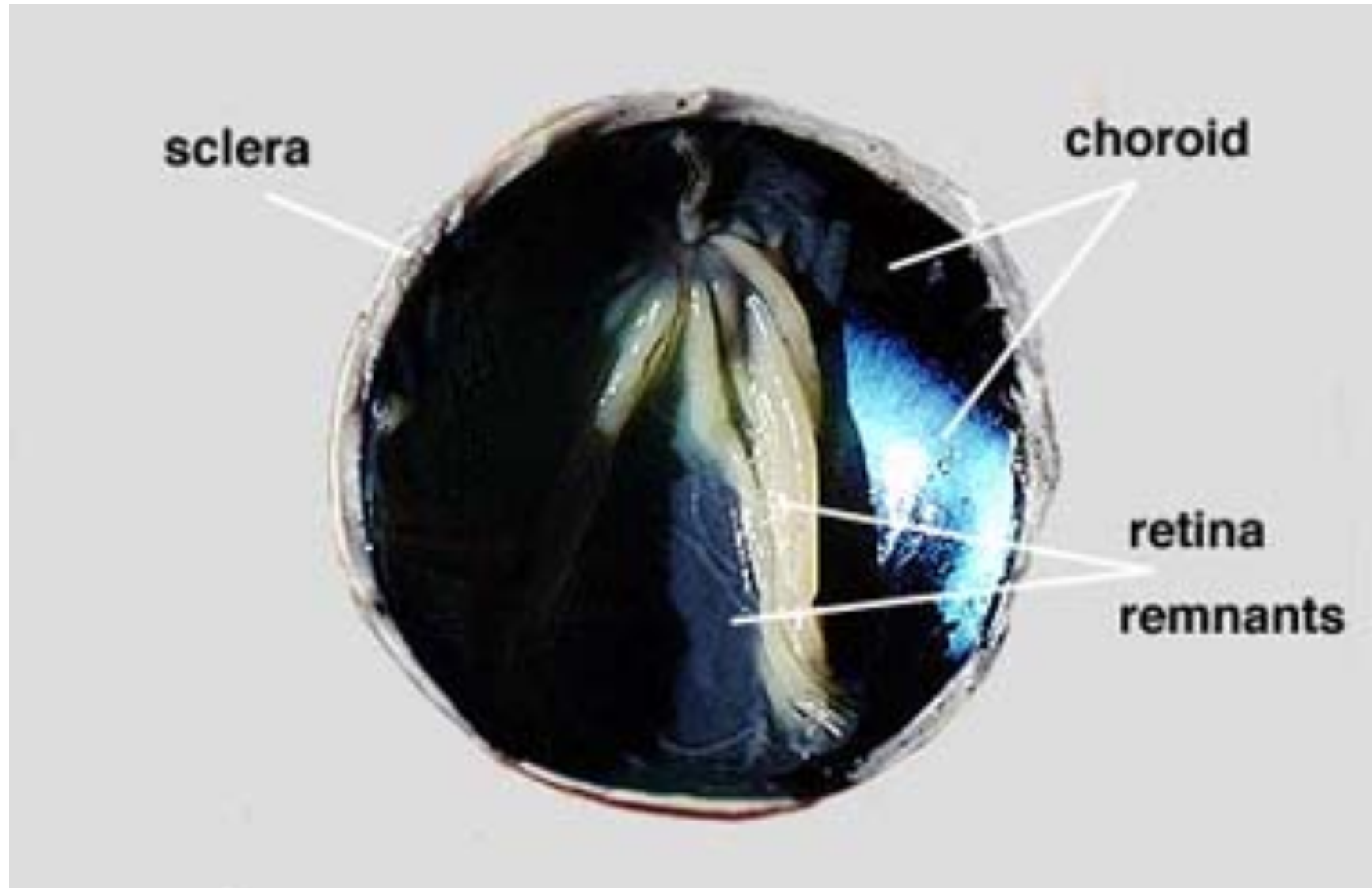
- Arrange the two hemispheres of the eye as you see in the photograph.
- Observe the semi-fluid vitreous humor that fills the central cavity of the eye. It is transparent in the living eye but might be cloudy in the preserved specimen



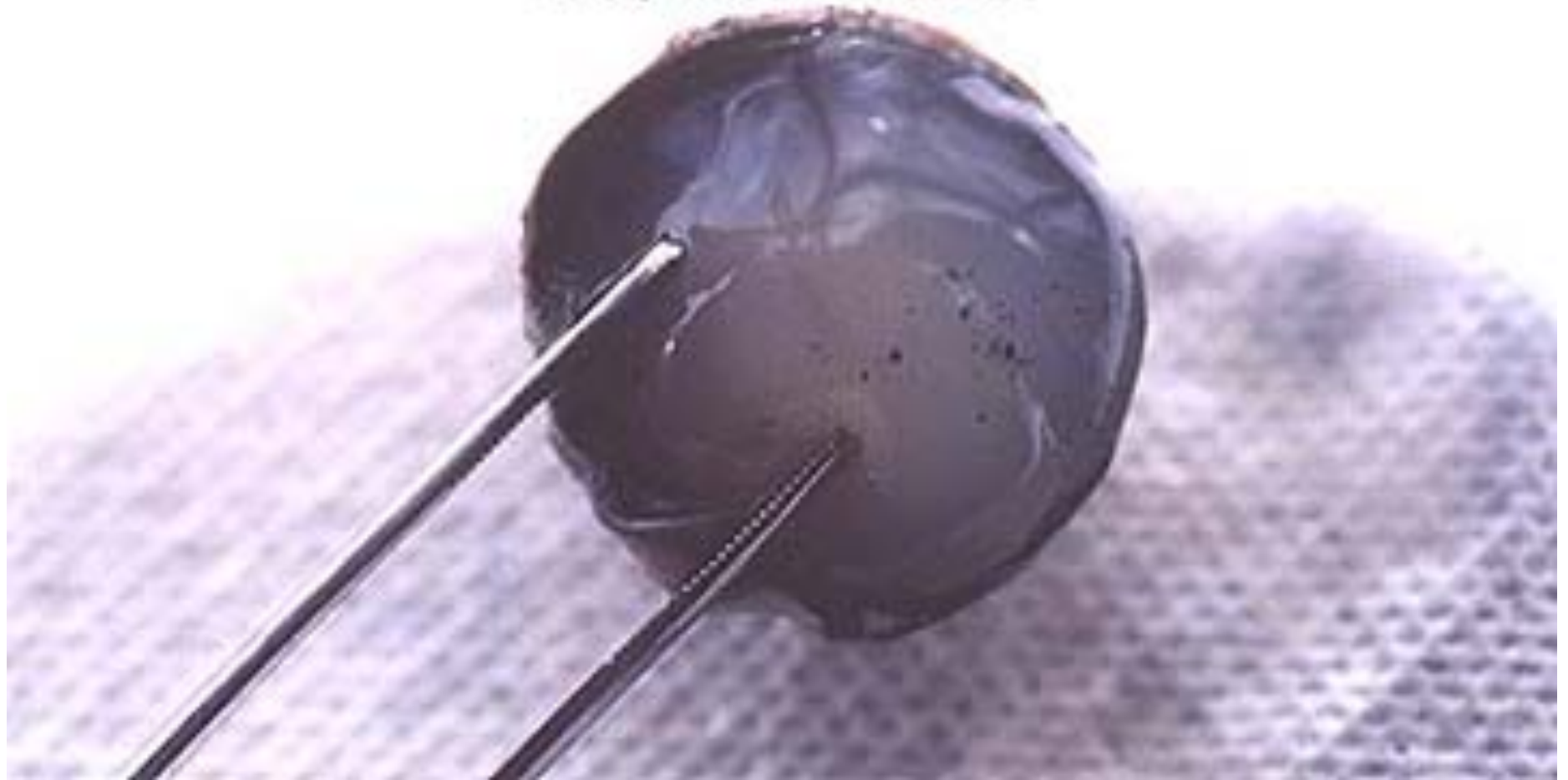


- The retina lines the the posterior cavity of the eye and extends forward to the ciliary body. Use your probe to lift and pull the retina back from the underlying choroid layer.
- Notice that the retina is only firmly attached to the choroid at one place. This region is the optic disc or blind spot.

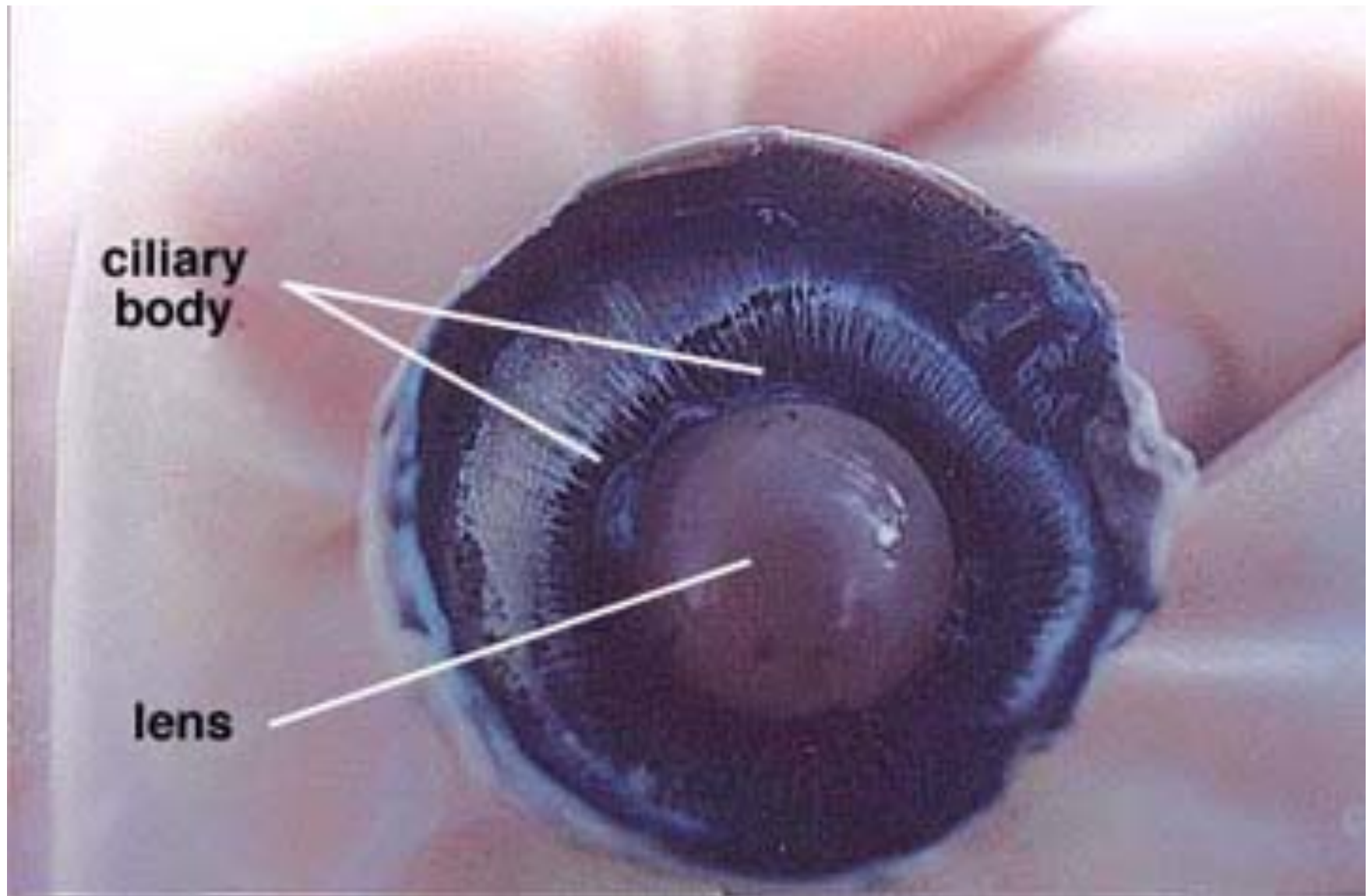
# Internal Eye Structure – Posterior Section



**Remove the vitreous humor from the anterior hemisphere of the eyeball. Try not to disturb the lens as the watery fluid is removed.**

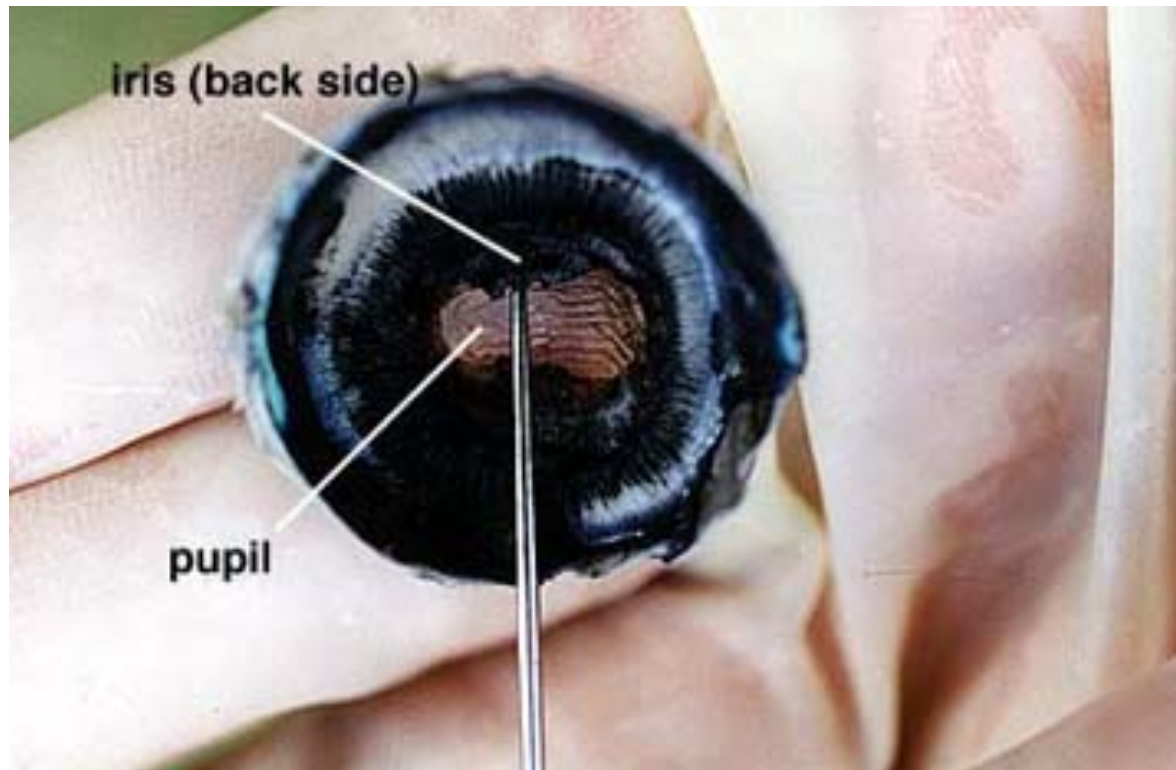


# Internal Eye Structures – Anterior Section

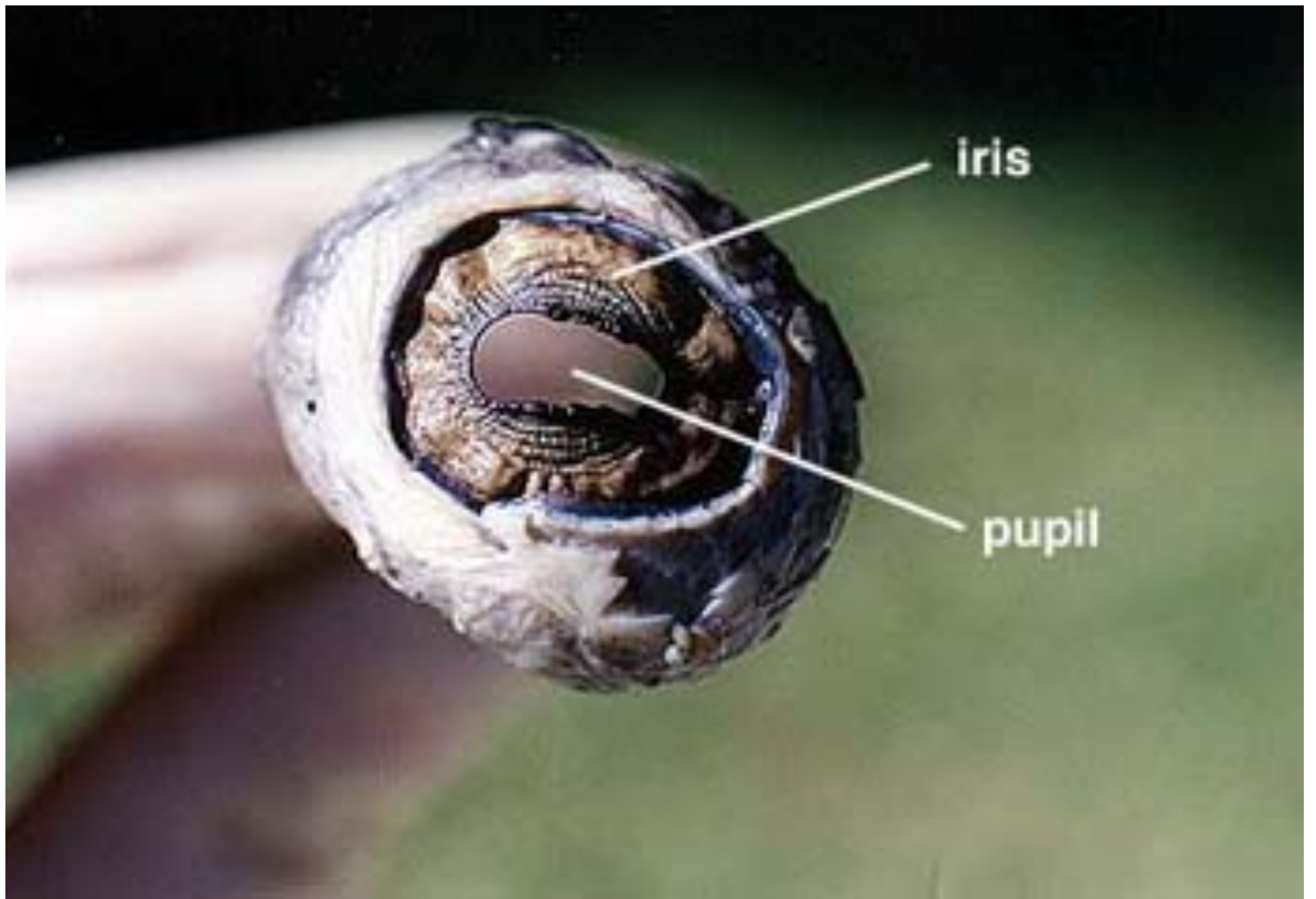


Remove the lens and place against newspaper to see that it is a magnifier!

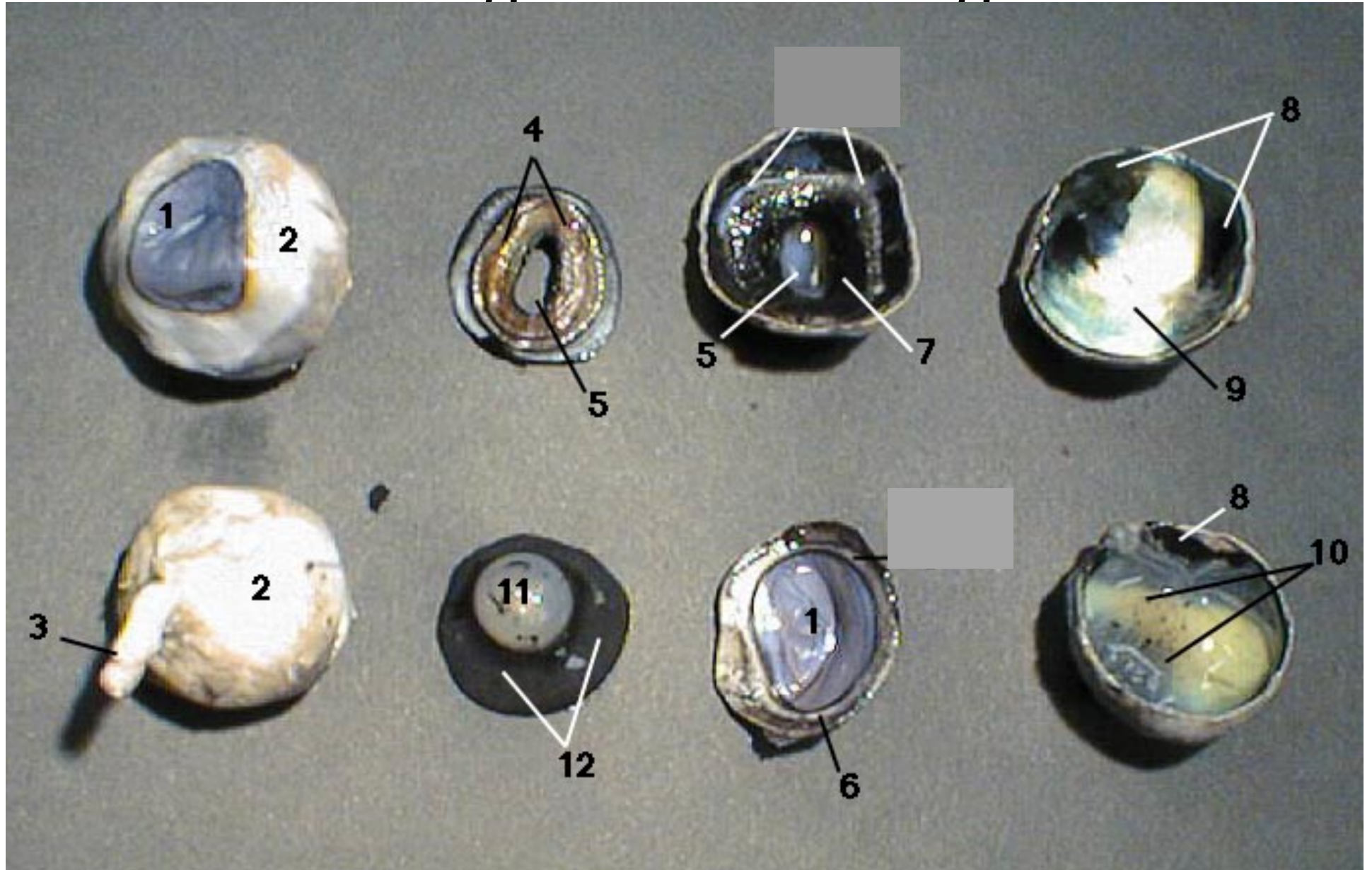




- When the lens is removed, an opening, allowing light to enter the eye is seen. This opening, the pupil is located in the center of the iris. Note the oblong shape of the sheep pupil, in humans the pupil is circular.
- The back side of the iris can be seen just above the pointer in the photograph.



Can you identify the parts? You will need to to get credit during the lab





1. Cornea
2. Sclera
3. Optic Nerve
4. Iris
5. Pupil
6. Ora Serrata (you do not have to know this structure!)
7. Ciliary Body
8. Choroid
9. Tapetum Lucidum
10. Retina
11. Lens
12. Vitreous Humor