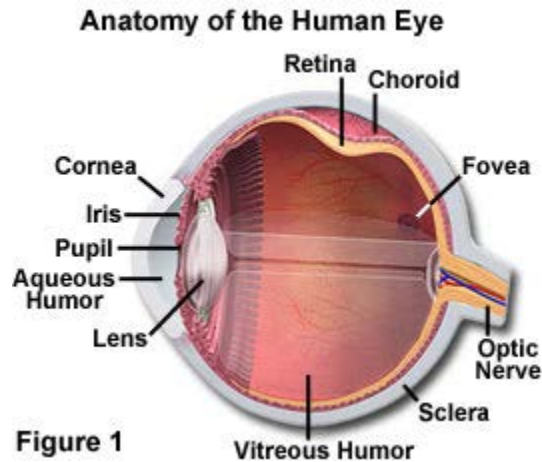


Name: \_\_\_\_\_  
Blk: \_\_\_\_\_ Date: \_\_\_\_\_

Science 8  
The Human Eye



Day 1.

Together with a partner, your task is to fashion a 3 dimensional model of the human eye out of the provided modeling clay. The following parts of the eye need to be included as described below:

- |   |  |
|---|--|
| 1. Sclera - white                         | 6. Iris-your choice of colour              |
| 2. Choroid- black                         | 7. Pupil-black                             |
| 3. Retina- red                            | 8. Aqueous humor- your choice of colour    |
| 4. Vitreous humor – colour of your choice | 9. Cornea-your choice of colour            |
| 5. Lens-your choice of colour             | 10. Optic Nerve-two colours of your choice |

You will begin construction of the eye from the inside out!

- i. Start by selecting the colour for your vitreous humour and then roll it into a sphere.
- ii. Using a round pencil or pen, roll out the retina clay and enwrap  $\frac{3}{4}$  ths of vitreous humour
- iii. Interweave your two colours of choice for the optic nerve at attach it to the “back” portion of the sphere
- iv. Now roll out the choroid clay and wrap it around the retina (which accounts only for  $\frac{3}{4}$  ths of the sphere) with it
- v. You will now assemble the front  $\frac{3}{4}$  of the eye: shape the convex lens and place it at the “front” of the eye
- vi. Create a donut like structure for the iris and place that in front of the lens
- vii. Fill the center of the donut with the pupil (black timbit)

- viii. Shape the clay for the aqueous humour and place it directly in front of the lens/iris/pupil structures
- ix. Shape and mold the cornea at very front of the eye
- x. Using a round pen or pencil as a rolling pin, roll out the sclera and enwrap the back  $\frac{3}{4}$  the of the eyeball

Day 2.

Together with your partner from Day 1 a piece of wire will be used to dissect your eyeball into two halves (as shown by Mrs. Weiss). When the eye has been cross-sectioned you will then individually use toothpicks, masking tape and a Sharpie to clearly label the 10 parts of the eye.

